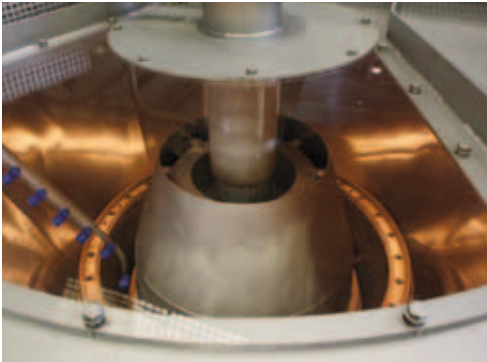


Market launch of the continuous K3300 centrifugal



*View into the exhibition
centrifugal – the product distributor
and the stepped basket*



*View of the Turbo3
distributor from below*

Its square appearance attracts attention, but at the same time it is very space-efficient and clearly structured thanks to its compact dimensions. With its new design of the K3300 centrifugal, BMA has managed to implement innovative ideas for an increased efficiency and safer operation of continuous centrifugals.

In all launch events, the K3300 has been arousing strong interest: at users' seminars in Germany and the United States, at sugar association meetings in Mexico and France, international meetings of sugar technologists in the Netherlands, and at trade fairs such as on the Philippines. Here, the K3300 that was presented during the PHILSUTEC fair in August 2009 at Cebu City was sold right on site; it now runs at the customer's fullest satisfaction. Further deliveries have been and are about to be performed to Asia and France. In Guatemala, the prototype that has been used for testing has been readily acquired by the sugar factory, and additional K3300 centrifugals will be installed there soon.

What's behind this new design? It is in particular for high throughputs of low-raw product from beet or cane sugar factories that a stepped basket has been developed and equipped with a wear-resistant wedge-bar screen at the lower step. The patented outlet openings in the basket shell ensure quick syrup discharge. Combined with efficient massecuite processing using the new standard product distributor or the alternative Turbo3 version, an energy-saving separation of syrup and sugar crystals can be performed, allowing excellent technological results.

By reducing the number of wear parts and using components with a longer service life, we have been able to enhance the availability of our centrifugals. The new construction of the centrifugal with a vibration-isolating support of the basket, the bearing assembly, an inner casing with V-belt duct and the motor provides for a smoother and more stable running of the centrifugal. This structure also allows positioning the vibration-damping elements outside the heat-affected zone, which

Presentation of the K3300 centrifugal

during the Philsutec fair



makes them easier to replace. Moreover, a non-contacting gap sealing between the upper basket edge and the inner casing can be provided, which avoids wearing of the seals. Far less maintenance will be required, which minimises maintenance costs.

All important components have undergone FEM analysis, to ensure high safety. Additional safety and monitoring functions have been integrated into the improved centrifugal control unit.

Sugar melting or magmatising can take place inside the centrifugal. All housing parts that come into contact with the sugar crystals are made of stainless steel, even in the standard model.

Hans-Heinrich Westendarp

Benefits

- High throughput and high sugar quality with low energy input
- Increased availability and safety
- High ease of use and minimised maintenance
- Easy assembly requiring little space