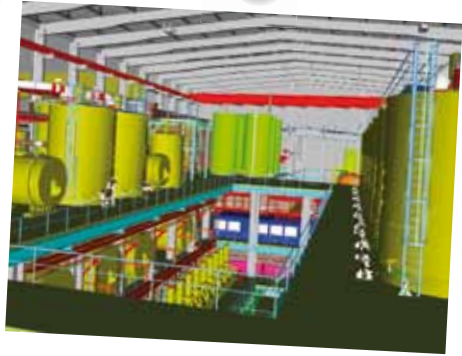
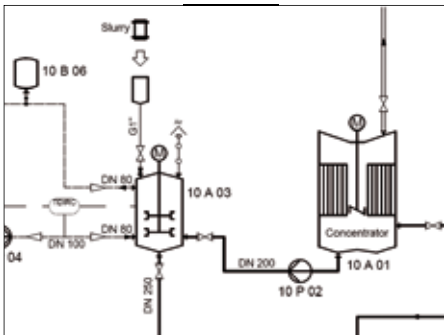




*Nampa sugar factory/USA:
Basic concept - modernisation of
pulp presses and pulp drying plant*



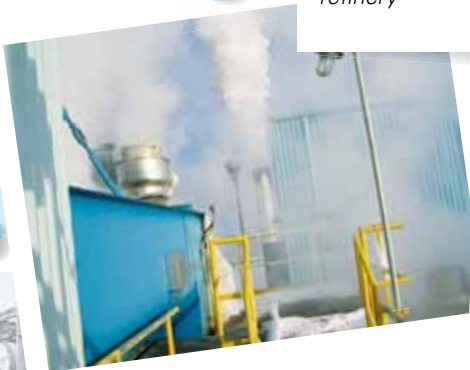
*Novin Khaleej Fars Sugar Refinery/Iran:
Detailed engineering for the
key refinery process*



*ITALIA ZUCCHERI/Italy:
Consulting services for the installation of
a new 1st crystal seed plant*



*Novin Khaleej Fars Sugar Refinery/Iran:
Basic engineering for a 3,000 t/d sugar
refinery*



*Taber sugar factory/Canada:
Energy consulting services*



*Dakhalia Sugar/Egypt:
Basic concept for expansion to a
slice rate of 10,000 t/d*



*COSUMAR refinery/Morocco:
Basic concept, basic and detailed
engineering for refinery expansion*

