

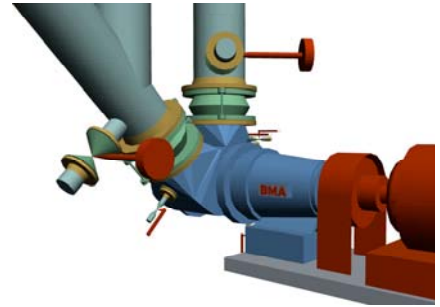
BMA
 Braunschweigische
 Maschinenbauanstalt AG
 Postfach 3225
 38022 BRAUNSCHWEIG
 GERMANY
 Phone +49 531-804-0
 Fax +49 531-804-216
 Internet www.bma-de.com
 sales@bma-de.com

BMA massecuite pumps of the FF series for high throughputs.

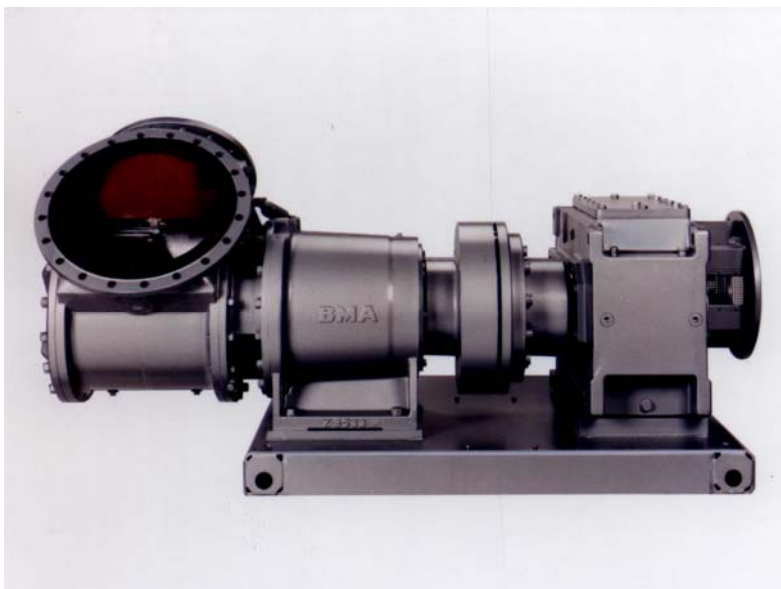
Type	Delivery m ³ /h
F 150 F	1 - 10
F 350 F	5 - 25
F 500 F	25 - 40
F 800 F	30 - 65
F1000 F	65 - 100

Some outstanding features of the FF series massecuite pumps are:

- Extreme reliability
- High throughputs at low impeller speeds
- Leak-proof due to mechanical seal
- Clearance between seal and anti-friction bearing housing protects the bearings and also facilitates inspection
- Easily accessible for maintenance
- Amply dimensioned connections reduce pressure losses
- Trouble-free pumping of high-viscosity massecuites
- Overhung impeller for free access to pump components
- Excellent price/performance ratio



Amply dimensioned connections for low pressure losses



F 1000 F